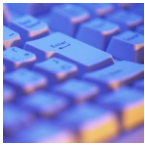


Minecraft Basics

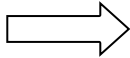
Welcome to a community of Minecraft enthusiasts. We want to assist in your transition into the Minecraft world by giving you some information necessary for your journey.



HELP!!! What do all the keys mean? The key pad of your computer serves as your controller.

Mindcraft CONTROLS for PC Users:

W, A, S, and D are for movement



The "Space" key is to jump.

R to respawn at the spawn point.

ENTER to set a new spawn point.

E to open the inventory

F to toggle fog distance.

Escape to release the mouse and open game menu.

1-9 to change the building block type.

Left mouse button to add a block.

Right mouse button to remove a block.

W	Forward
A	Left
S	Back
D	Right
Spacebar	Jump
↑ Left Shift	Sneak
E	Inventory
Q	Drop
T	Chat
Tab ↵	List Players



Attack



Use Item



Pick Block

Mindcraft CONTROLS for MAC Users:

Using a Mac laptop and the pre-set control options can be annoying. I have never played games on the computer (with the exception of solitaire, etc.), so I think I had to customize quite a bit in order to feel comfortable and get started.

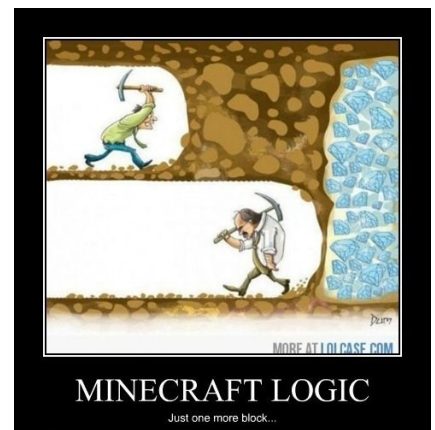
I used the arrows for direction (ie: up=forward, left=left, right=right, down=back); I kept the spacebar to jump; Drop=D (makes more sense to me, I guess); I=Inventory (again, makes more sense to me); return key=attack/break/dig, etc.; back/delete=use item.

Once I bought a wireless mouse I had a much easier time looking around in different directions; I decided to make the left click the "attack" button and the right click the button to "use items". It made for faster building, digging, breaking, and zombie killing. Jenn

Learn the process from a tutorial episode:

[Minecraft Tutorial](#)

Understand the environment, the material to be used to produce tools and stay away from darkness.
Secure a safe place to built while you make your material.
Liberata:



BLOCKS are the foundation of Minecraft, without them you cannot build anything. There are over 150 types of blocks this depends on the level you are mining at and the world you have selected/given. But we won't get ahead of ourselves... this is the "Basic" page. Here is list of blocks you will initially encounter.



[Stone](#)



[Grass Block](#)



[Dirt](#)



[Bedrock](#)



[Water](#)



[Lava](#)



[Sand](#)



[Gravel](#)



[Gold Ore](#)



[Iron Ore](#)



[Coal Ore](#)



[Wood](#)



[Leaves](#)



[Lapis Lazuli Ore](#)



[Sandstone](#)

What are you going to do with all those blocks? Craft. But in order to do that you need a Crafting table. This is how you make one. Take four wood trunks and place them in your inventory area. (see picture below)

Remember: to get to your inventory press "E" on the keyboard.



This is just the beginning of your crafting . You will use the resources you mined and found to make a your Minecraft world and to survive . Make your essential survival tools first, pick axes, ax, shovel, hoes, sword, a bed would be great...After you build your shelter. Here is just a sample of what you can make.



Here are some helpful hint!!!!!!

- Don't forget about the crouch function! Its one of the most integral building tricks involved in Minecraft.
- When building at extremely dangerous heights or cliffs, the crouched position enables the user to scale the edge without falling. --Jon

GOOD LUCK AND HAPPY MINECRAFTING!!!!!!